



HOTEL
BARCELONA
GOLF ——— ★★★★★ ——— RESORT

MEETING ROOMS

SEASON 2023

Hotel Barcelona Golf Resort **** Superior

MEETING ROOMS

Penedès

With 204 m2, it is a space with panoramic views of the golf course and has the necessary working equipment to comfortably hold meetings in a totally welcoming atmosphere, as well as an access ramp for cars and the possibility of holding car presentations inside.



Terra Alta

This meeting room of 133 m2 is a bright space with views of our swimming pool where all kinds of events, meetings and even training workshop can be held.



Empordà

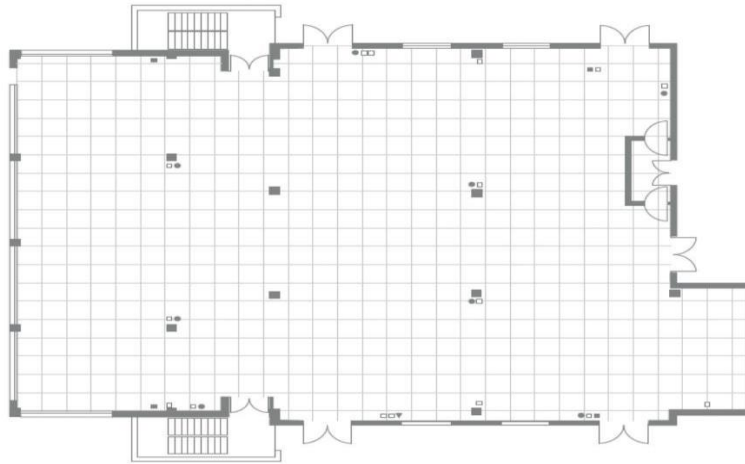
With 115 m2, this is a meeting room with views over our small garden offering a cosy and quiet feeling where different types of conferences can be held.



Tarragona

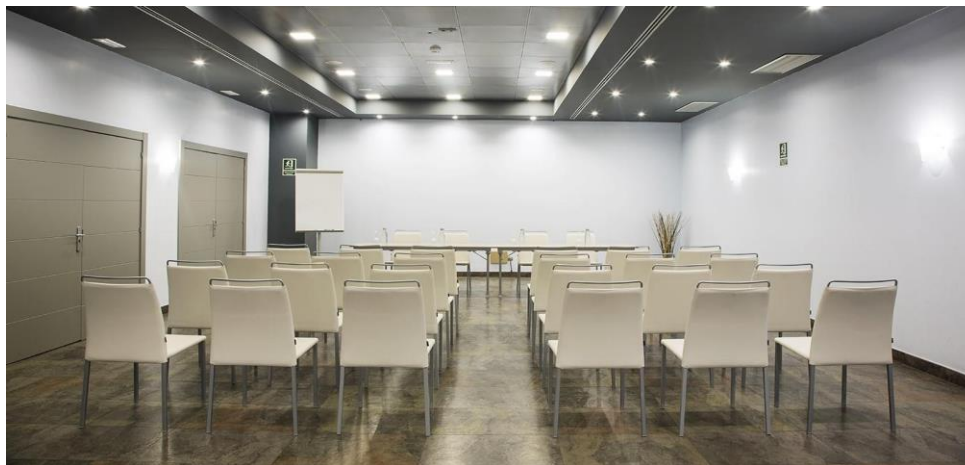
This is the largest meeting room in the hotel as it is a combination of the Sala Penedès, the Sala Terra Alta and the Sala Empordà.

Thanks to its large size, it can host all kinds of corporate events for up to 300 delegates.



Anoia

With 55 m2, our smallest but most welcoming meeting room, it guarantees a quiet and discreet space with all the necessary working equipment to comfortably hold meetings in a cosy atmosphere.

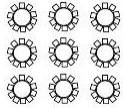


Baix Llobregat

60 m2 meeting room equipped with multimedia support and suitable for discreet conferences and all types of small meetings.

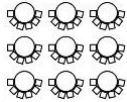


Assembly types



Banquet assembly

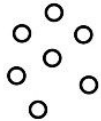
Generally used for formal dinners with circular tables usually consisting of 8 to 10 guests..



Cabaret assembly

Generally used for meetings, leaving a clear view of where the meeting is headed, allowing guests to share opinions while taking notes.

The tables are circular up to a maximum of 8.

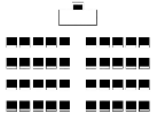


Cocktail / reception assembly

Generally used for more dynamic lunches where the guest is standing.

The tables are circular and high only for support.

Types of assembly



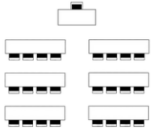
Theatre assembly

Generally used when the guest does not need to take notes. These are lines of chairs facing the meeting.



U or horseshoe assembly

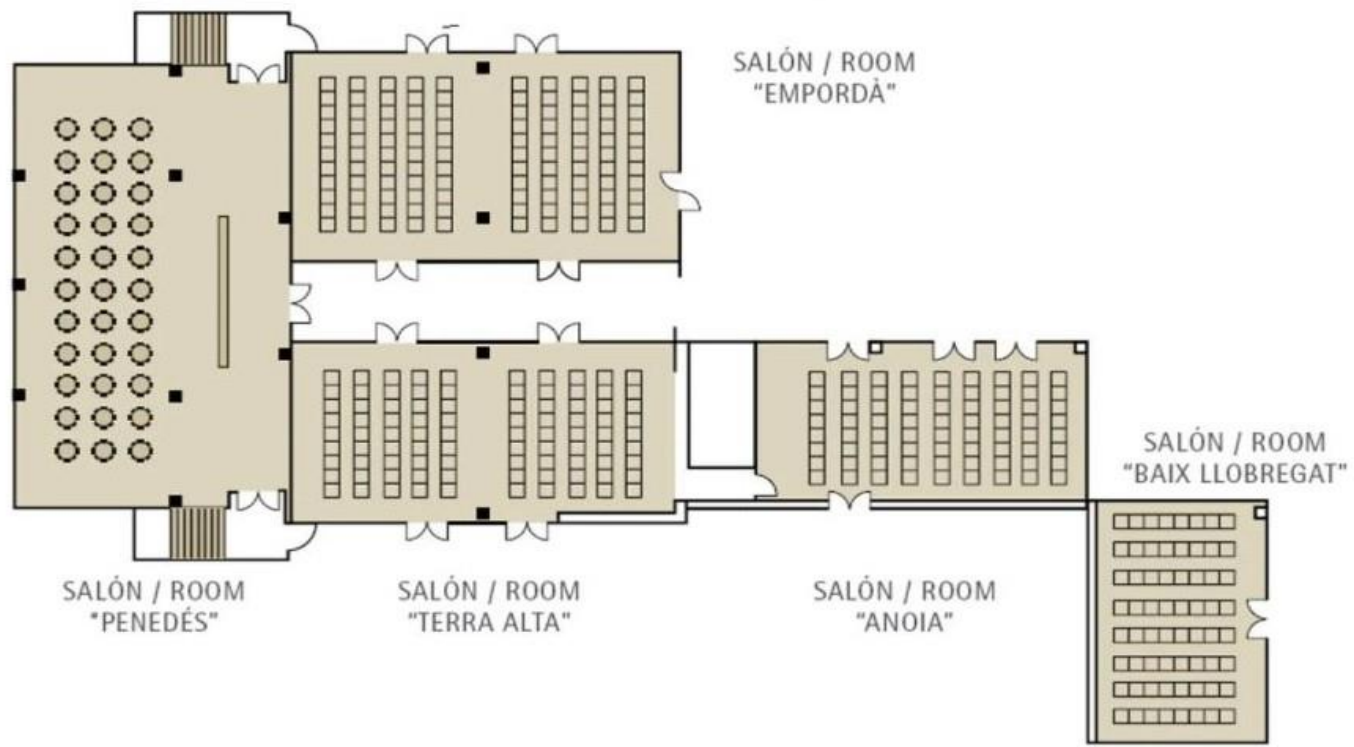
Generally used for meetings with a small number of assistants, avoiding that they are too far from each other. The tables are rectangular, forming a U-shape.



School assembly

Generally used for long meetings where the guest needs to take notes. The tables are rectangular and face the meeting for up to 3/4 people.

* Saló Tarragona: Saló Penedès + Saló Terra Alta + Saló Empordà





CONTACT:

Events department

+34 937 756 800

Av. Golf Masía Bach S/N

eventos@hotelbarcelonagolf.com

www.hotelbarcelonagolf.com

Hotel Barcelona Golf Resort **** Superior